

Guided Harness Assembly and Testing

from 256 to 32,000 points

It's a tester

The *easy-wire*TM CR is a compact, versatile system that tests harnesses, backplanes and wired assemblies for opens, shorts, and mis-wires with user-selectable pass/fail resistance thresholds from 0.1Ω to 500kΩ. It also tests resistors, diodes, and capacitors. Kelvin (4-wire) mode nulls out interface fixture resistance and provides measurements as low as .010Ω.

Compact & Expandable: The CR base unit and each expansion scanner provides 256 test points in enclosures measuring 5.4" x 6.6" x 2.6" and weighing only 2.9 lbs. each. The CR is expandable to 32,000 test points and its daisy-chain architecture allows test points to be distributed around the device under test reducing the length and complexity of interface cabling.



It's a guided assembly aid

On-screen graphical representation of connectors, along with blinking LEDs on the harness board, make the CR ideal for helping operators to speed the task of building harnesses. Even experienced assemblers will appreciate the immediate audible feedback provided, catching wiring errors the instant they occur.

Fast and Easy: The *easy-wire*TM user interface simplifies test program development by providing a step-by-step process with graphical prompts. Connector detail is created once and stored in a library for use in multiple test programs. Instructions can be learned from a sample product, created manually or imported from wirelist data.

Versatile: With sequential build/test mode, random build/test mode, single test, and continuous test the CR can be set up to handle a wide variety of harness build and test needs.

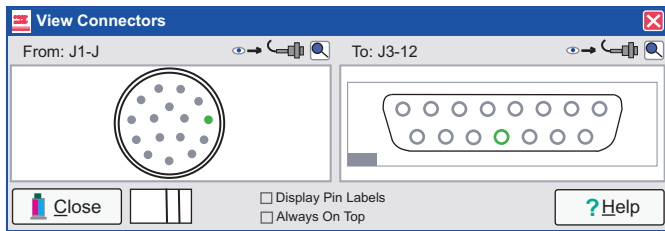
Call Toll-free 1-800-441-9910
www.cirris.com

CIRRISS[®]
Cable/Harness Testing Made EasyTM

Finally a guided harness assembly/test system that is easy to set up and use!

The *easy-wire*TM CR is a “test-while-you-build” system that combines graphical instructions with audible and visual feedback to improve quality and to increase assembly efficiency.

Graphics: The *easy-wire*TM software includes a library of over 270 connectors with graphics. Simply select one of these connectors to add it to a test program. Adding new connectors to the library is a straightforward process using the software’s built-in drawing capability.



Graphical connector representation.

Random Back-Wiring: After the harness board is back-wired, the software guides the user through a simple process of associating test points with connector labels and contact positions using the probe. This allows the tester to provide instructions and messages in product terminology.

Specifications

TEST POINTS

Expandable from 256 to 32,000 points in 256-point increments.

UNIT TYPES

Base Scanner: 256 points, one required per test system
 Add-on Scanner: 256 points, no power required
 Booster Scanner: 256 points, one required after each 7 add-on scanners

TEST LEVELS (up to 4,096 points; over 4,096 points, consult factory)

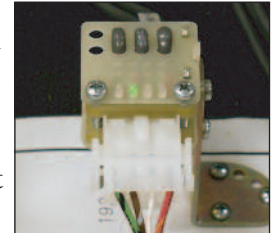
Voltage: 10 volts at < 6mA
 Resistance: 0.1Ω to 100kΩ ±3% ±0.1Ω, 100kΩ to 1MΩ ±5%
 Capacitance: 100pF to 1000μF ±10%
 Components Tested: resistors, diodes, LEDs, capacitors
 Distributed Testing: max distance between boxes, 20 feet; max distance total system, 200 feet
 Test Rate: 256 points < 1 second
 Mating Connectors: 64 point (2 row x 32 pins) 0.1" box header with latches

COMPUTER REQUIREMENTS

Test Station: 1.6 GHz min. processor speed, Windows XP or Windows 7 OS (Professional editions recommended), 10 GB hard drive space, 2 GB RAM, 128 MB min. video memory, 1024 x 768 min display resolution, sound (for audible feedback), USB 2.0 or 3.0 port

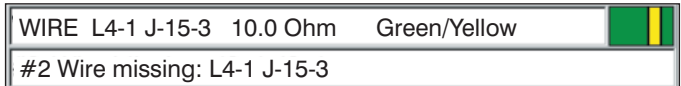
Optional Network Database Server: Same hardware requirements as above except no sound or USB ports required. Windows XP Pro, Windows 7 Pro, Windows Server 2003 or Windows Server 2008 OS.

LED Guided Assembly: LEDs can be associated with test program build instructions or groups of instructions to provide visual, on-the-board guidance to operators. The LEDs are driven by regular test points (2 points per LED) and no special electronics are required.



Blinking LEDs indicate wire routing.

Audible and Visual Results: When using the *easy-wire*TM CR for guided harness assembly an audible tone sounds each time a connection is made: one tone for a good connection and a different tone for a bad connection. In addition, green blinking LEDs indicate the next two points to be terminated, while red blinking LEDs indicate a mis-wired connection.



User-defined pin names/wire definitions.

POWER (required for base unit and boosters only)

105-130 VAC, 60Hz 16 watts max
 210-260 VAC, 50Hz (optional)

PROBE/WRIST STRAP

For wire/pin identification during guided assembly, testing, and editing

SIZE

5.4" x 6.6" x 2.6" (13.7 x 16.8 x 6.6 cm)

WEIGHT (per box)

2.9 lbs (1.3 kg)

SOFTWARE FEATURES

Learn from sample or import test instructions
 Build mode for testing during harness assembly
 Audible, graphical and visual feedback during test, assembly, and edit
 Password security
 Data collection
 Flexible reports
 Connector library
 Regular test points drive guidance LEDs

WARRANTY

One year parts and labor. Replacement modules available next working day.

For More Information Call Toll-free 1-800-441-9910

CIRRIS[®]
Cable/Harness Testing Made Easy[™]