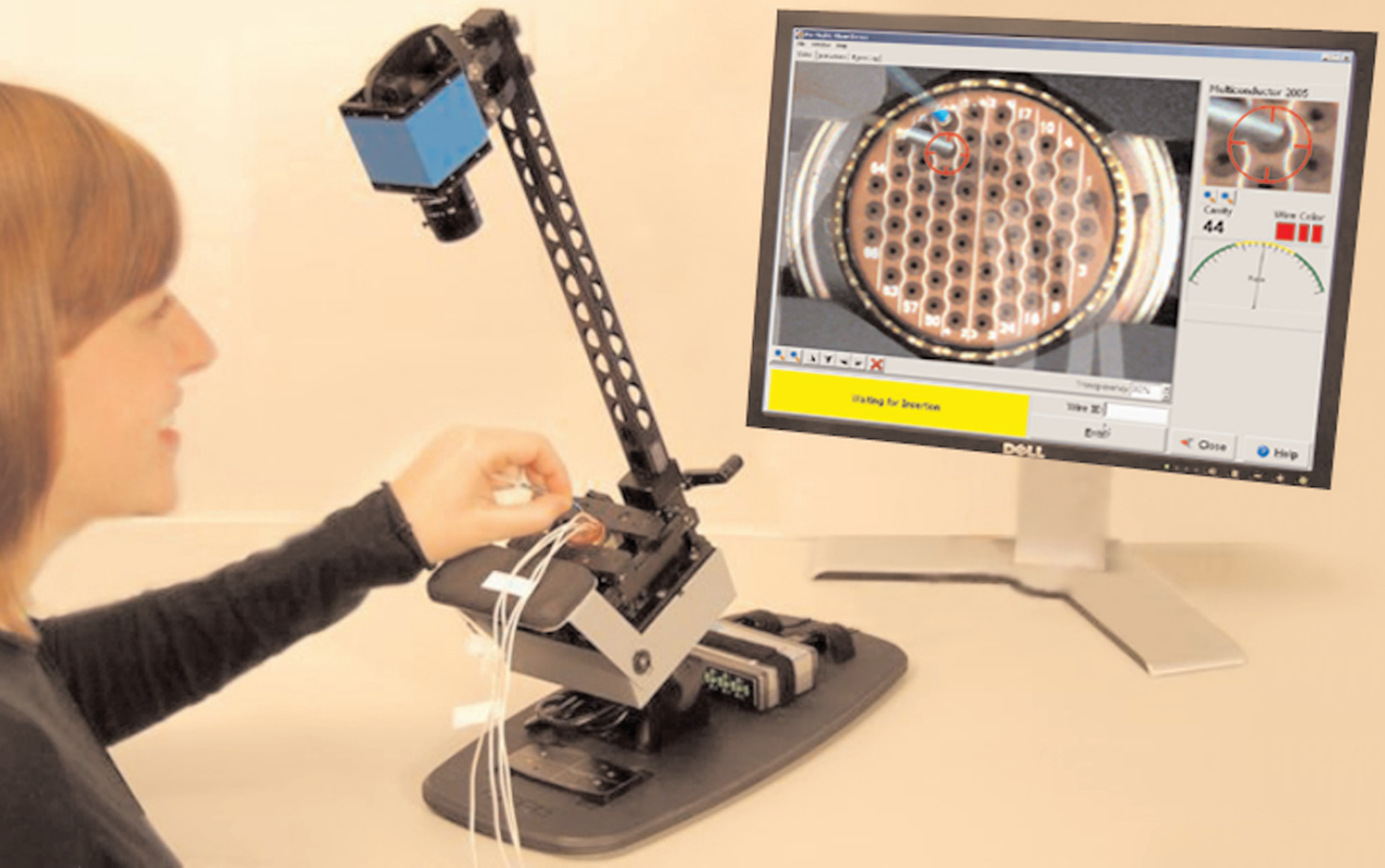


# PIN-SIGHT



## Error-proofing tool for inserting wires into a connector

**Pin-Sight** is a revolutionary tool for building quality into cable and harness assemblies

**Eliminate mis-plugged wires:** Pin-sight guides the assembler, real-time on the monitor, to insert the correct wire into the correct cavity.

**Assure Contacts are "Locked in:"** Pin-Sight's base is mounted on a force gauge that measures push/ pull forces. The software requires the operator to perform a pullback test to verify contact retention.

**Increase throughput:** Pin-sight helps make assemblers faster and more accurate. Field tests show throughput increases of 10-15%

for skilled operators and up to 50% for new operators.

**Improve Quality - Save Time and Money:**

Deliver better quality cables and harnesses in less time. Think of the cost savings alone by eliminating the need to troubleshoot and re-work cables that presently fail final electrical test.

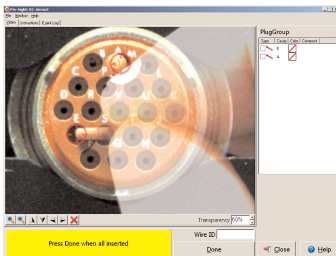
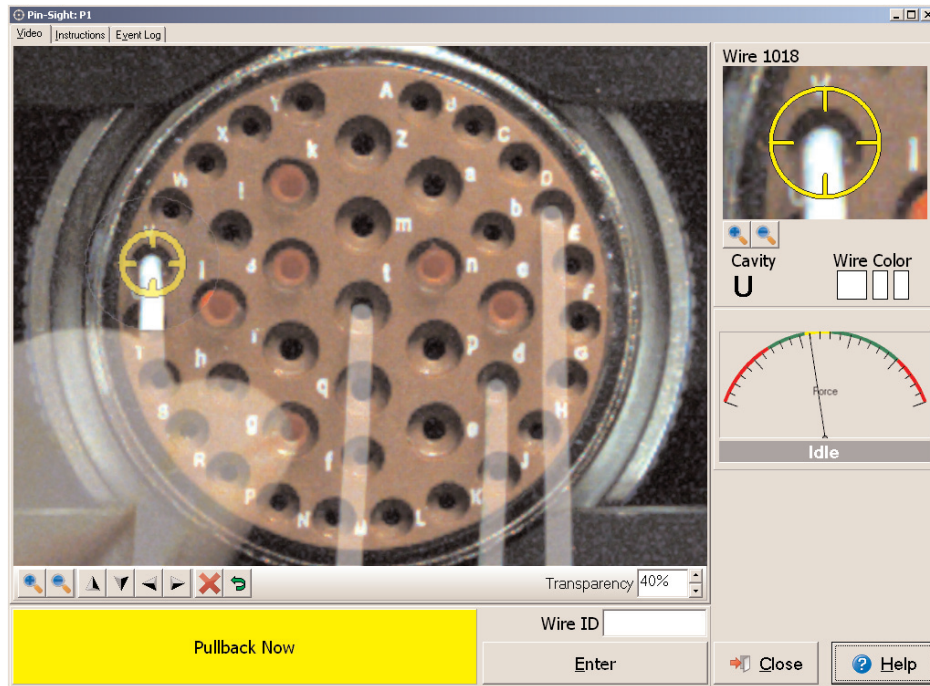
Call Toll-free 1-800-441-9910 • [www.cirris.com](http://www.cirris.com)

**CIRRIS®**

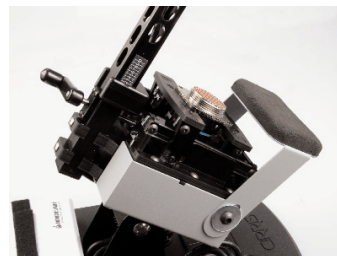
**Cable/Harness Testing Made Easy™**

# PIN-SIGHT

Pin-Sight utilizes a high-resolution CCD camera connected to a computer to provide real-time imaging to guide assemblers through the process of inserting wires into a connector. Database software allows you to store connector images, build programs, and assembly data as part of your complete quality control system.



Pin-sight is also ideal for guiding the insertion of seal plugs and spare pins.



Force sensor gauge measures pullback force to verify contact retention. In addition, Pin-Sight is FIXTURELESS.



High-resolution CCD camera provides clear real-time video feed. Optional A.O.I. (automated optical inspection) software confirms correct placement of wires and pins.

## Specifications

### Computer Requirements:

Minimum: 1.6GHz, 5GB free disk space, speaker and sound card, video must support DirectX 9, min. 1024x768 resolution, Windows XP, SVGA monitor, mouse, 1GB RAM

**Push Force:** 6 lbs.  $\pm$  .1 lbs.

**Pull Force:** 6 lbs.  $\pm$  .1 lbs.

**Maximum Connector Size:** 2.5" x 4"/6.35 cm x 10.2 cm (for larger size connectors consult factory)

**Maximum Viewing Size:** 3" x 4"/7.6 cm x 10.2 cm (larger view size available with different lens)

**Size:** Height 19.5" Base 14" x 7"/Height 49.5 cm Base 35.5 cm x 18 cm

**Weight:** 10 lbs./4.5 kg

Call Toll-free 1-800-441-9910 • [www.cirris.com](http://www.cirris.com)

**CIRRIS**

Cable/Harness Testing Made Easy™